

# Weed Roundup

Volume 4, Issue 1 April 2008

The Community Weed Awareness Campaign

Editor: Cathy Shelton

*"Weeds are nobody's guests: More like squatters."*

*Norman Nicholson*



Cathy Shelton, Marilyn Kaussner, Else Van Erp, Renee Cormier, County Commissioner Kathy Hartman and Bud Weare.

*What a party! Last June, we celebrated our 10<sup>th</sup> annual Community Weed Day. We hope you were able to enjoy the beautiful day, weed work, delicious cake, snacks and door prizes with us. It bears repeating that we wouldn't have been celebrating if it weren't for all of our dedicated volunteers- That means YOU!*

*Each year our efforts to educate the community expand. This year we will give two programs at the new Evergreen Nature Center in the historic Warming Hut. We will also participate in "Pulling 4 Colorado", a statewide weed education day. Our volunteers will be at the Idaho Springs Safeway doing weed education with Clear Creek Weed Specialist, Ted Brown. Stop by and see us!*

## 11<sup>th</sup> Annual Community Weed Day

Join the "in crowd" at Community Weed Day. We will start off with refreshments at 8:00 followed by weeding in teams until 11:00. Our remarkable weed experts will identify plants brought in by the public and we will present our infamous display of local weeds. Many hands make light work of the weeds.

Saturday, June 21

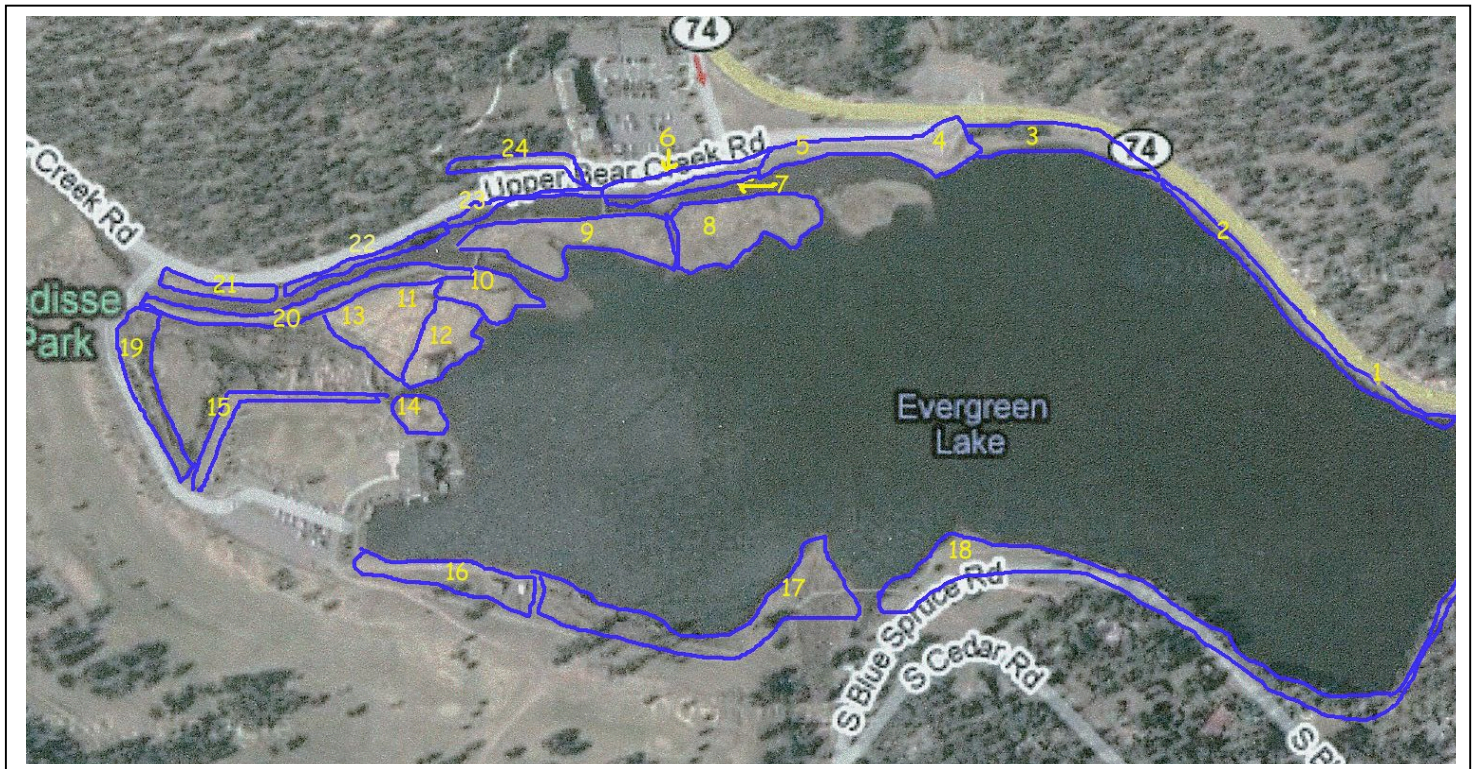
Evergreen Lake

8-11am Weeding & Education Outreach

Tell your friends and neighbors to come and learn how to ID their weeds.

## Adopt-A-Plot

Adopt-a-Plot is one of our most successful projects. Currently we have only one orphan plot. Some small plots are heavily infested while larger ones have fewer weeds. We do try to make each plot manageable. If you need help with your plot, or you can't work your plot this season, please let us know! Adopters report that there are fewer weeds each year! A special thanks to all those listed below who have worked so hard to rid the Lake of noxious weeds.



Plot 1 & 2 - Wendy and AL Jewsbury, Plot 3 - Jonelle Balais, Plot 4, 5 & 7 - Betsy Kelson & the Sierra Club, Plot 6 - Linda Gallup, Plot 8 - the Garrison family, Plot 9 - Betsy Hoke, Plot 10 - Wild Rose Church, Plot 11 - Joy Schumacher, Plot 12 - Renee Cormier and Dickie Langworthy, Plot 13 - Brock Schwartz, Plot 14 - Bob & Sylvia Robertson, Plot 15 - Pat Carter, Plot 16 - Renee Cormier, Plot 17 - Ann & Gerry Saul, Plot 18 - John Canny, Plot 19 - Deb Callahan & Dave Jones, Plot 20 - Sharon & Norman Milford, Plot 21 - Margaret McDole & Mark Meremonte and Mercedes & Rose Smith, Plot 22 & 23 - Jim & Cathy Shelton, Plot 24 - available. Kudos also to Larry White and Irma Wolf who took it upon themselves to control the thistle in the deep wetlands and on the boundary with the golf course.

**Thank you all for a terrific 2007 weed season.**

**PLEASE remember to track your hours and mileage - we can use them for matching grant money and your mileage is deductible on your personal taxes.**

*Questions? Email Cathy at [sheltonpublicaddress@hotmail.com](mailto:sheltonpublicaddress@hotmail.com) or call 303-674-8610*

## NEWS you can USE

Evergreen Newspapers is graciously running our noxious weed articles in the Mountain Lifestyles insert of their newspapers. Look for the insert the second Wednesday of each month. Our first article will be on the early weeds, Cheatgrass and Myrtle spurge.

\*\*\*\*\*

Betsy Kelson and Cathy Shelton will be presenting a program at the Evergreen Nature Center on Saturday,

May 31 from 10 am to noon. They will discuss escaped ornamental weeds; plants appropriate for mountain gardens and warning signs to look for at the nursery. Don't plant the next obnoxious invader in your yard! Registration is requested. See [www.dipper.org](http://www.dipper.org) for more information.

\*\*\*\*\*

"Pulling for Colorado" is a statewide weed education campaign on Saturday, July 12. The largest event will be at Bear Creek Lake State Park, Lakewood, from 8:00 am to noon. Food, beverages and park entrance are provided for volunteers. Registration is required. As mentioned on page 1, CWAC will be at the Idaho Springs Safeway from 10-2. For information on the other statewide events, go to [www.cwma.org/p4c.htm](http://www.cwma.org/p4c.htm)

\*\*\*\*\*

The volunteer kick-off for Friends of Mt. Evans and Lost Creek Wildernesses' (FOMELC) is Wednesday, April 23 from 5:00 to 9:00 pm at Evergreen Beau Jo's.

They have a full slate of training and volunteer opportunities through June, including "Weed Mapping and Identification" on Saturday, June 14 from 8:30 am to 2:00 pm at the S. Platte Ranger District at Goddard Ranch. To register for the above events and to see the complete FOMELC calendar, go to

[www.fomelc.org](http://www.fomelc.org).

\*\*\*\*\*

## Noxious Weed Resources

### Local Weed Organizations:

\*Community Weed Awareness Campaign  
303-674-8610 or 303-674-1715

[www.dipper.org](http://www.dipper.org)

\*Friends of Beaver Brook Watershed  
(303) 679-2305

\*Friends of Mount Evans & Lost Creek  
<http://www.fomelc.org/>

### County Weed Managers:

#### \*Clear Creek County

Ted Brown  
303-679-2467

<http://co.clear-creek.co.us/Depts/weeds.htm>

#### \*Boulder County

Steve Sauer  
303-678-6110

#### \*Denver City and County

Gayle Weinstein  
303-341-0115

#### \*Gilpin County

Irene Shonle  
303-582-9106

#### \*Jefferson County

Alicia Doran  
303-271-5989

<http://www.co.jefferson.co.us/weed/>

#### \*Park County

Alan Swartz  
719-836-4167

[http://www.parkcounty.org/Noxious\\_Weed\\_Control/noxious\\_weed\\_control.html](http://www.parkcounty.org/Noxious_Weed_Control/noxious_weed_control.html)

#### \*Summit County

Lisa Taylor  
970-668-4218

<http://www.co.summit.co.us/weeds/home.htm>

### Identification and control websites:

\*Colorado Weed Management Assoc.

<http://www.cwma.org/>

\*CSU Natural Resources Fact Sheets

<http://www.ext.colostate.edu/pubs/natres/pubnatr.html>

### The Community Weed Awareness Campaign Steering Committee:

Cathy Shelton (TENAS)

Sylvia Robertson (TENAS)

Betsy Kelson (Sierra Club)

Renee Cormier (At Large)

Marilyn Kaussner (Garden Club)

Bud Weare (Garden Club)

Else VanErp (TENAS)

Pat Carter (Garden Club)

Sylvia Brockner (Emeritus)

A special THANK YOU to Alicia Doran, Jefferson County Weed and Pest, for loaning us a display case for our weed exhibit at the Evergreen Nature Center.

## ***Community Weed Awareness Campaign-2008 Calendar***

***Apr 19.....Weed Booth at Earth Day Fair-Evergreen Lake***

***10:00 am to 4:00 pm***

***May 31.....“Garden Smart” program-Evergreen Nature Center***

***10:00 am to noon (Registration required)***

***June 21.....11<sup>th</sup> Community Weed Day - Evergreen Lake***

***8:00 am to 11:00 am***

***July 12.....Education outreach - Idaho Springs Safeway***

***10:00 am to 2:00 pm***

***Aug 7.....Weed & Wine - Volunteers Only- Evergreen Lake***

***Weeding - 4:00 pm; Party - 6:00 pm***

***Sept 13.....“Thistles-Native vs. Noxious” program-Nature Center***

***Times TBD***



*“Preserving our natural heritage and biodiversity  
through community education and active  
noxious weed management.”*

*The Community Weed Awareness Campaign  
6684 Olympus Drive  
Evergreen, CO 80439*

TO: