



Weed Roundup

Volume 6, Issue 1 May 2010

The Community Weed Awareness Campaign

Editor: Cathy Shelton

"You cannot get something for nothing—unless it's a weed."



Cheryl and Aiden Manning dressed for success at the 2009 Community Weed Day.

Celebrating a successful 2009 Weed Season

Our amazing volunteers always deliver and the 12th Community Weed Day was no exception. Seven teams, with a total of 39 volunteers, spent 78.5 hours pulling knapweed, Scotch, Musk and Bull thistle, and cutting Canada thistle stems at Evergreen Lake and Dedisse Park. Approximately 43 area residents brought in plants for identification, and discussed noxious weed identification and control with our 6 volunteer weed and native plant experts. An additional 4 volunteers handled coordination, registration, refreshments, photography etc. All volunteers received the 2009 "Noxious Weeds of Colorado" along with other brochures and handouts thanks to our Pulling for Colorado weed grant. Volunteers also received the P4C water bottles thanks to Pulling for Colorado.



Native Plant Master, Pam Little helped visitors learn to identify noxious weeds.



Mark Sweppenheiser, Bob Robertson and Nina Sampsel make quick work of weeds and litter along the Lake's edge.



13th Annual Community Weed Day

Join us at **Community Weed Day** for noxious weed education and weeding around the Lake. We will start off with refreshments at 8:00 followed by weeding in teams until 11:00. Our knowledgeable weed experts will identify plants brought in by the public and we will present our infamous display of local weeds. Many hands make light work of the weeds.

Saturday, June 12

Evergreen Lake

8-11am Weeding & Education Outreach

Invite your friends and neighbors to come and learn how to ID their weeds.

PLEASE bring your own water bottle to reduce the need for plastic!

We'll have water available for refills. Thanks.



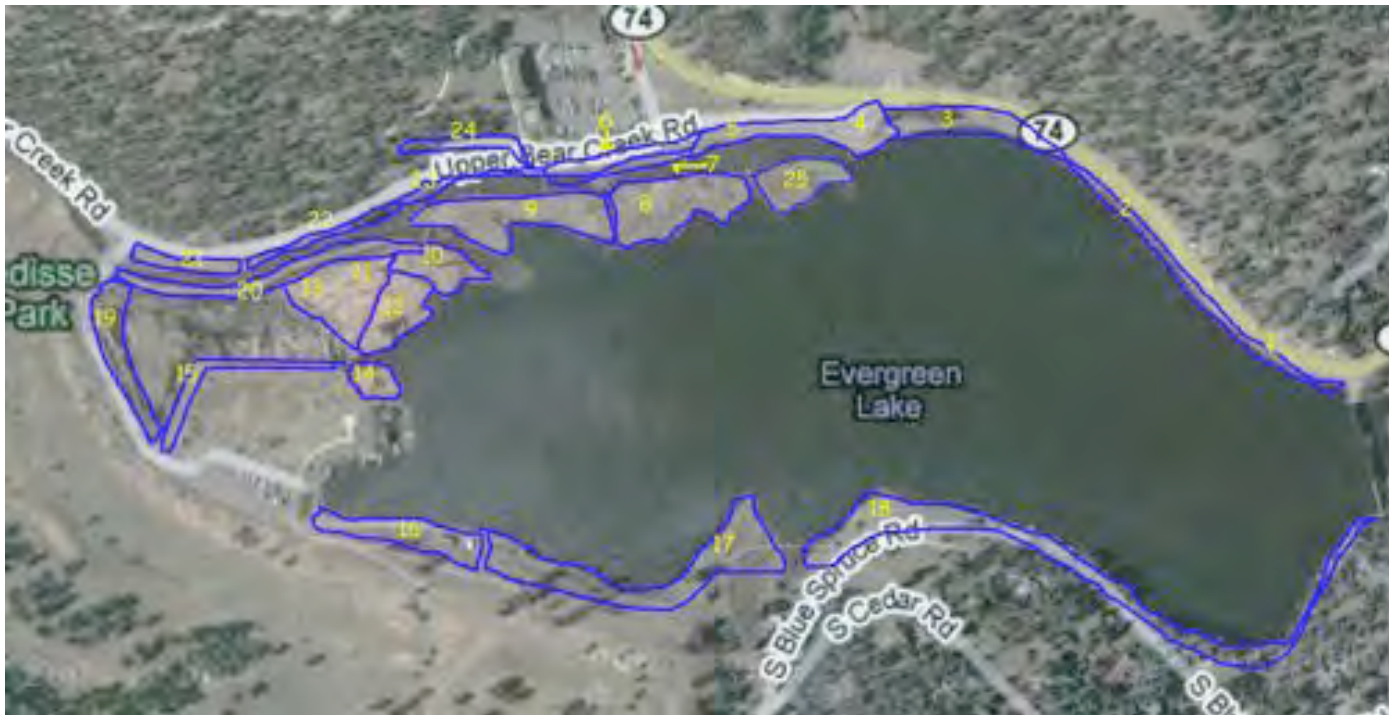
Betsy, Marilyn, Sylvia and Pat plan for the coming weed season.

The Community Weed Awareness Campaign Steering Committee:

*Cathy Shelton (TENAS)
 Betsy Kelson (Sierra Club)
 Sylvia Robertson (TENAS)
 Marilyn Kaussner (Garden Club)
 Pat Carter (Garden Club)
 Deb Callahan (TENAS)
 Renee Cormier (At Large)
 Else VanErp (TENAS)
 Larry White (TENAS)
 Bud Weare (Garden Club)
 Sylvia Brockner (Emeritus)*

Adopt-A-Plot

Help!!! We have an acute shortage of volunteers for our Adopt-A-Plot program. Please consider adopting a plot for the 2010 weed season. We do try to make each plot manageable. If you can adopt, let us know. If you don't feel like you can take on a plot by yourself, we can always use helpers for other plots.



Plot 1 - OPEN, Plot 2 - Wendy and AL Jewsbury, Plot 3 - OPEN, Plot 4, 5 & 7 - Betsy Kelson & the Sierra Club, Plot 6 - Linda Gallup, Plot 8 - Jonelle Balais, Plot 9 - OPEN, Plot 10 - Wild Rose Church, Plot 11 - Joy Schumacher, Plot 12 - Renee Cormier and Dickie Langworthy, Plot 13 - OPEN, Plot 14 - Bob & Sylvia Robertson, Plot 15 - Pat Carter, Plot 16 - Renee Cormier, Plot 17 - Posey Posse, Plot 18 - OPEN, Plot 19 - Deb Callahan & Dave Jones, Plot 20 - Sharon & Norman Milford, Plot 21 - Margaret McDole & Mark Meremonte and Mercedes Smith, Plot 22 & 23 - Jim & Cathy Shelton, Plot 24 - OPEN, Plot 25-Manning Family.

Thank you to all of our terrific volunteers listed above.

PLEASE remember to track your hours and mileage - we can use them for matching grant money and your mileage is deductible on your personal taxes.

**Questions? Want to join the CWAC Committee? Interested in Adopt-a-Plot?
Email Cathv at sheltonpublicaddress@hotmail.com or call 303-674-8610**

Education Outreach Gets a Facelift

Thanks to a 2009 *Pulling for Colorado* Weed Grant, we were able to buy two banners and folding tables. The banners help our visibility and the tables make it easier for our volunteers to set up the display. The photo below shows Sylvia Robertson, at the Evergreen Safeway, spreading the word about the negative impacts of noxious weeds.



Another new tool for our education efforts is a PowerPoint presentation being prepared by Renee Cormier and Marilyn Kaussner. The first "pod" will be ready by the time this newsletter reaches you. It covers basic information on CWAC and the Colorado Weed Law, along with pictures of our top 20 or so weeds. Both Marilyn and Renee have put a lot of time into this project; we are especially grateful for Renee's computer expertise. We'd also like to thank Irene Shonle, Gilpin County Extension Director, who shared her PowerPoint as a starting point for our project.

NEWS you can USE

Wake up and Weed is our new volunteer appreciation event, taking the place of Weed & Wine. Many of our volunteer couldn't make it to the evening festivities of Weed & Wine, and thunderstorms often derailed us, so we decided to try something new. We hope you'll join us on August 21 at 8:30 am for a little weeding at Evergreen Lake, followed by a light brunch at 10:00.

"Pulling for Colorado" is a statewide weed education campaign with various events being held throughout the state on Saturday, July 10th. CWAC will be doing education outreach in Evergreen on the 10th at the Evergreen Safeway. Go to www.cwma.org/p4c.htm for more information on all of the statewide events.

The *"Pulling for Colorado"* Organizing Committee received the 2009 Partnership Award from the Colorado Weed Management Association. Committee members are Denny Bohon, Alicia Doran, Tom McClure, Cathy Shelton, Julie Guzzetta and Elizabeth Brown.

The Evergreen Nature Center is open! The Weed Display is just one of the many educational and fun offerings of ENC. There will also be a "Garden Smart" Program, presented by Pat Carter and Betsy Kelson on May 22nd. For more information on this program and others, go to www.evergreenaudubon.org

On a personal note:

I recently had the opportunity to go to Tanzania and while there are many differences between Africa and Colorado, one thing we have in common is weeds. It was interesting to learn that some African weeds are American wildflowers, proving once again; it is location, location, location. So what makes a plant a weed? In a general sense, a weed is a plant where you don't want it. But for our purposes, a "noxious" weed is a non-native invasive species. Colorado's noxious weeds primarily originate in Europe, Asia or Africa, whereas Tanzania's worst weed comes from us. Mexican Prickly-poppy, *Argemone mexicana*, photo to the right, is a U.S. native invading the Serengeti. This grasslands ecosystem is home to magnificent plants, herbivores, predators, birds and insects, all threatened by degradation of habitat caused partly by weeds.



Colorado's weed problem is not much different than the Serengeti's. Noxious weeds out-compete native plant species, impacting the food source for native wildlife. One difference is that Colorado is in the forefront of weed management. Even though money is tight, our state and local governments recognize the importance of weed control. While it is difficult for developing nations to use their limited funds to combat weeds, luckily the Serengeti has many friends worldwide helping to make weed control a reality.

As I traveled the Serengeti I realized that unless you are told which plants are natives, and which are invasives, it is hard to know the difference. Thankfully our guide was well versed in plants and not just mega-fauna. The importance of weed education hit home.

Just as the gazelles, wildebeests and leopards of Africa are threatened by Mexican poppies, Colorado's deer, elk and mountain lions are jeopardized by our invasive species. Control of weeds is an important step in protecting the world's precious resources, including those outside our back door. We hope you will continue to support our efforts.

Cathy

CWAC will be submitting noxious weeds articles to Evergreen Newspapers for the *Mountain Lifestyles* monthly insert. They have graciously published many of our articles in past years, but space is limited and much sought after. If you enjoy our articles, please let the editor know. If you would like to contribute your weeding experience, or have a suggestion for an article, email it to Cathy at sheltonpublicaddress@hotmail.com and we'll try to include it in upcoming articles.

Community Weed Awareness Campaign-2010 Calendar

May 6	Weed Presentation to EMERGE
May 22	“Garden Smart” program-Evergreen Nature Center 10:00 am to noon (Registration required)
June 12	13 th Community Weed Day - Evergreen Lake 8:00 am to 11:00 am
June 14	Weed Presentation to DAR (members only)
June 26	Weed Presentation to Buffalo Park Association
July 10	Education outreach – Pulling for Colorado 10:00 am to 2:00 pm – Evergreen Safeway
Aug 7	Education Outreach - Conifer King Soopers 10:00 am to 2:00 pm
Aug 21	Wake up and Weed– Evergreen Lake Weeding - 8:30 am; Brunch – 10:00 am
Sept.	To be determined



*“Preserving our natural heritage and biodiversity
through community education and active
noxious weed management.”*

*The Community Weed Awareness Campaign
6684 Olympus Drive
Evergreen, CO 80439*

TO: